



Hurricane Ian Advisory #23

For Planning Purposes Only!

WASHINGTON, DC
08:24:14
28 Sep 2022

CHICAGO
07:24:14
28 Sep 2022

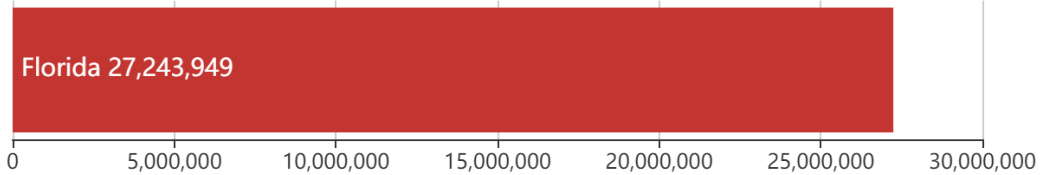
LOS ANGELES
05:24:14
28 Sep 2022

<https://simsuite.usace.army.mil/wab/v2.15/MissionModels/#advid=272&oid=84&name=Hurricane%20Ian&advisory=Advisory%20%2323&advlf=G>

Updated as of 28 Sep 2022 (7:24 AM Central Daylight Time)

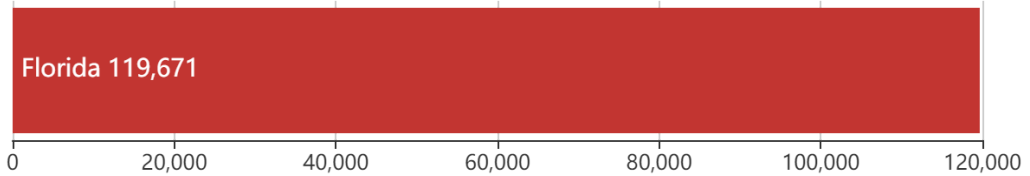
Debris

27.2M
cu. yd.



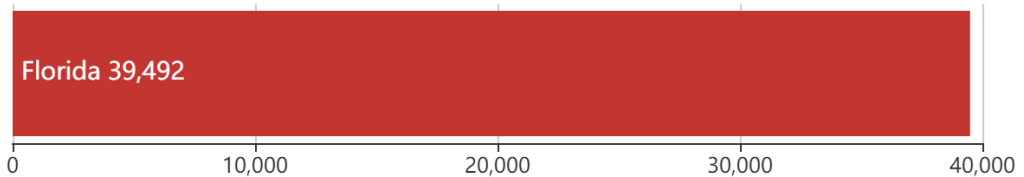
Est. Temp. Roofing

119.7K
units



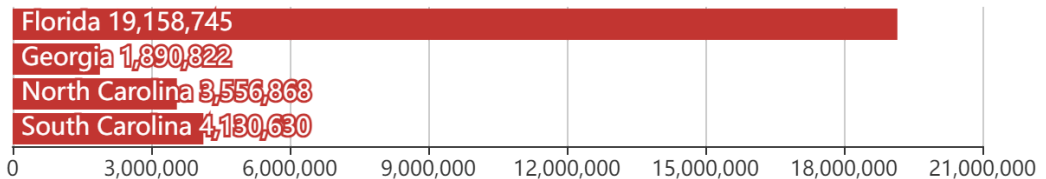
Act. Temp. Roofing

39.5K
units



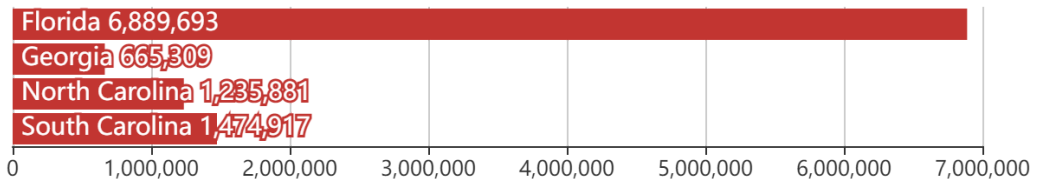
Population

28.7M
people



Households

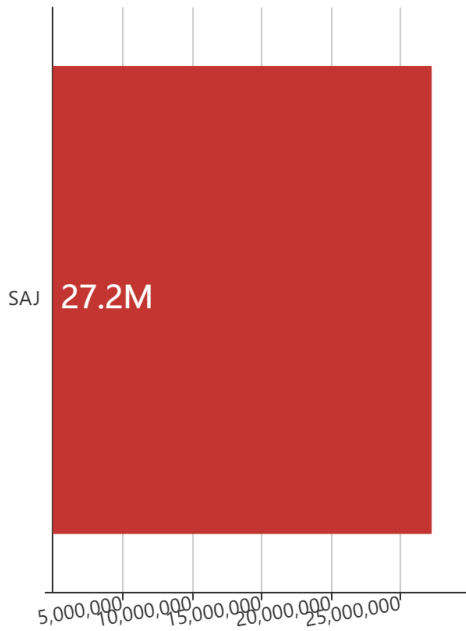
10.3M
households



Mission Model Summary

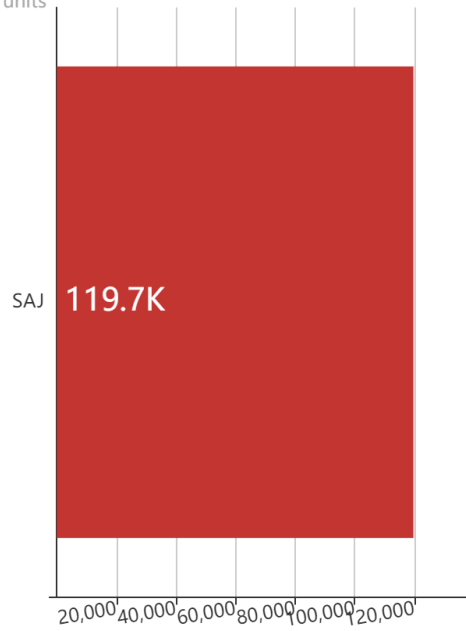
Debris By USACE District

cu. yd.

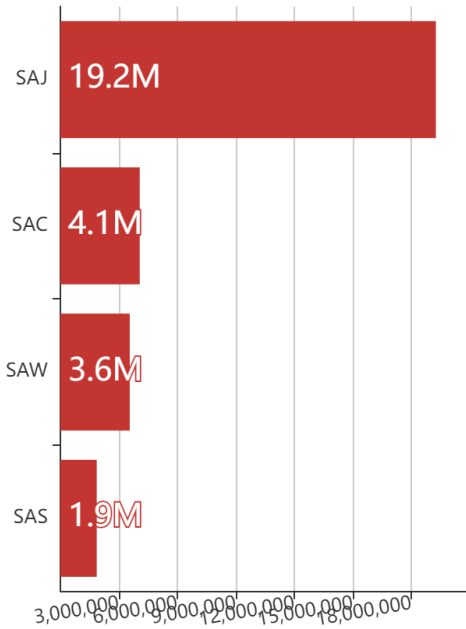


Est. Temp. Roofing By USACE District

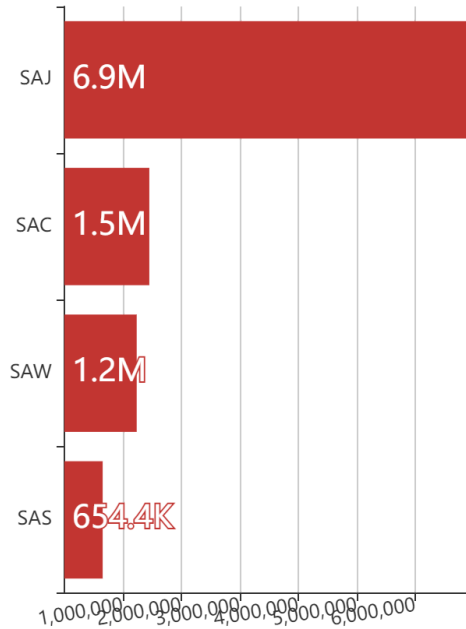
units



Population By USACE District



Households By USACE District



Critical Infrastructure Summary

Total

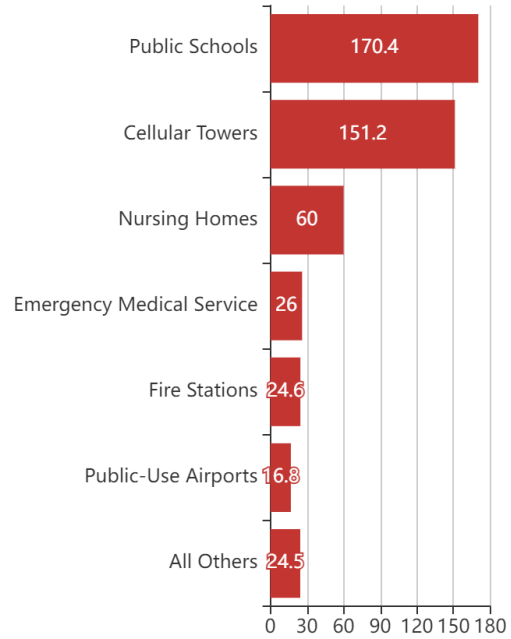


Power Requirements



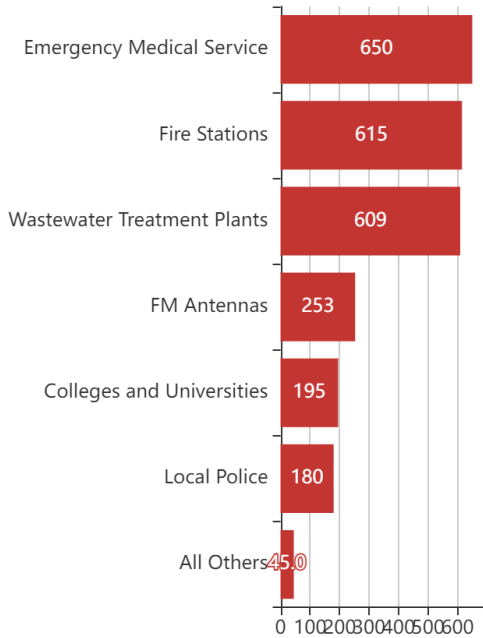
Generators

By Generator Count



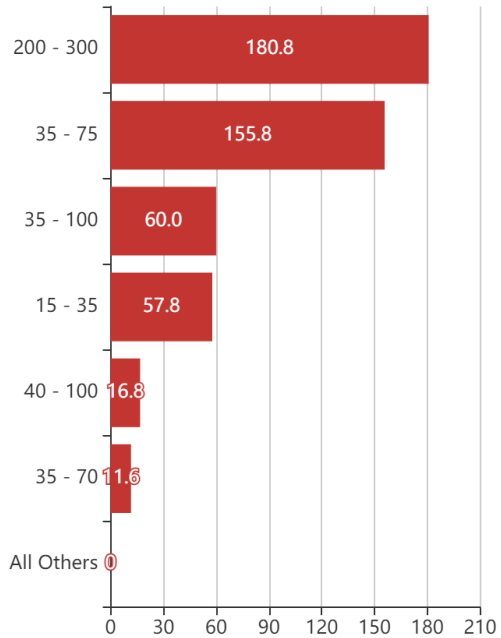
Generators

By Power Requirement



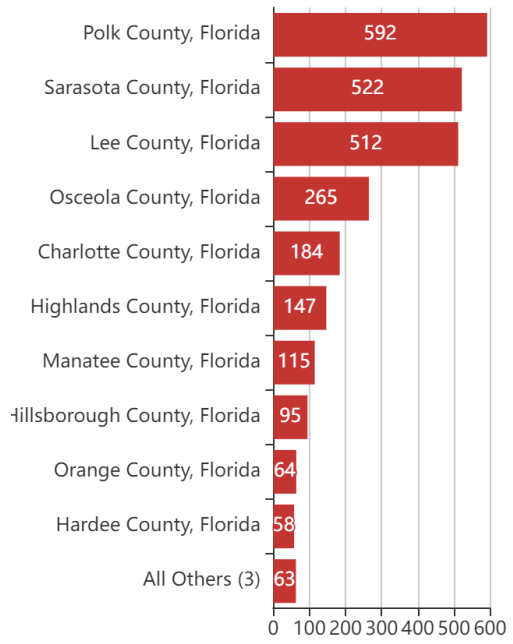
Generators

By Range



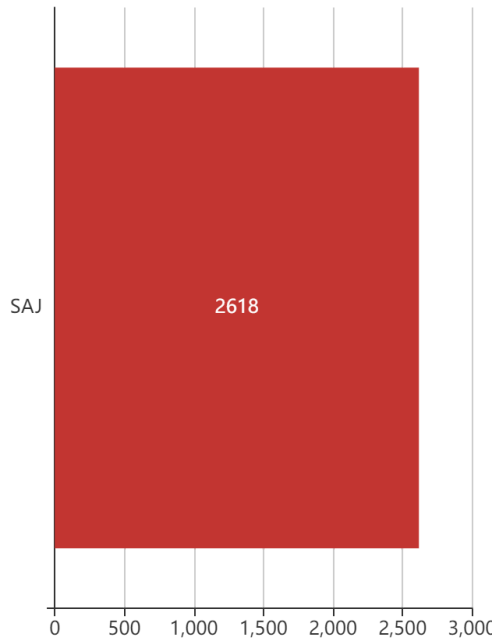
Structures

By County



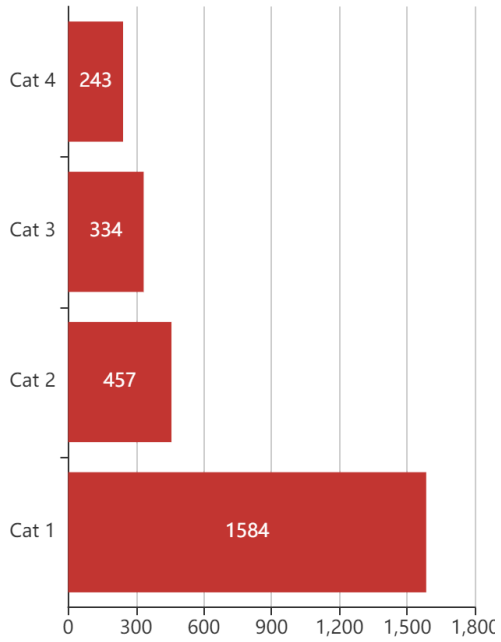
Structures

By USACE District

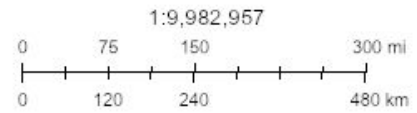
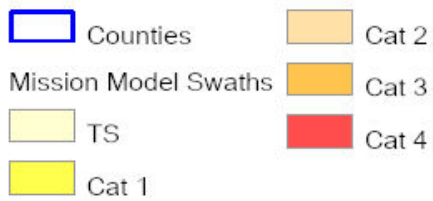
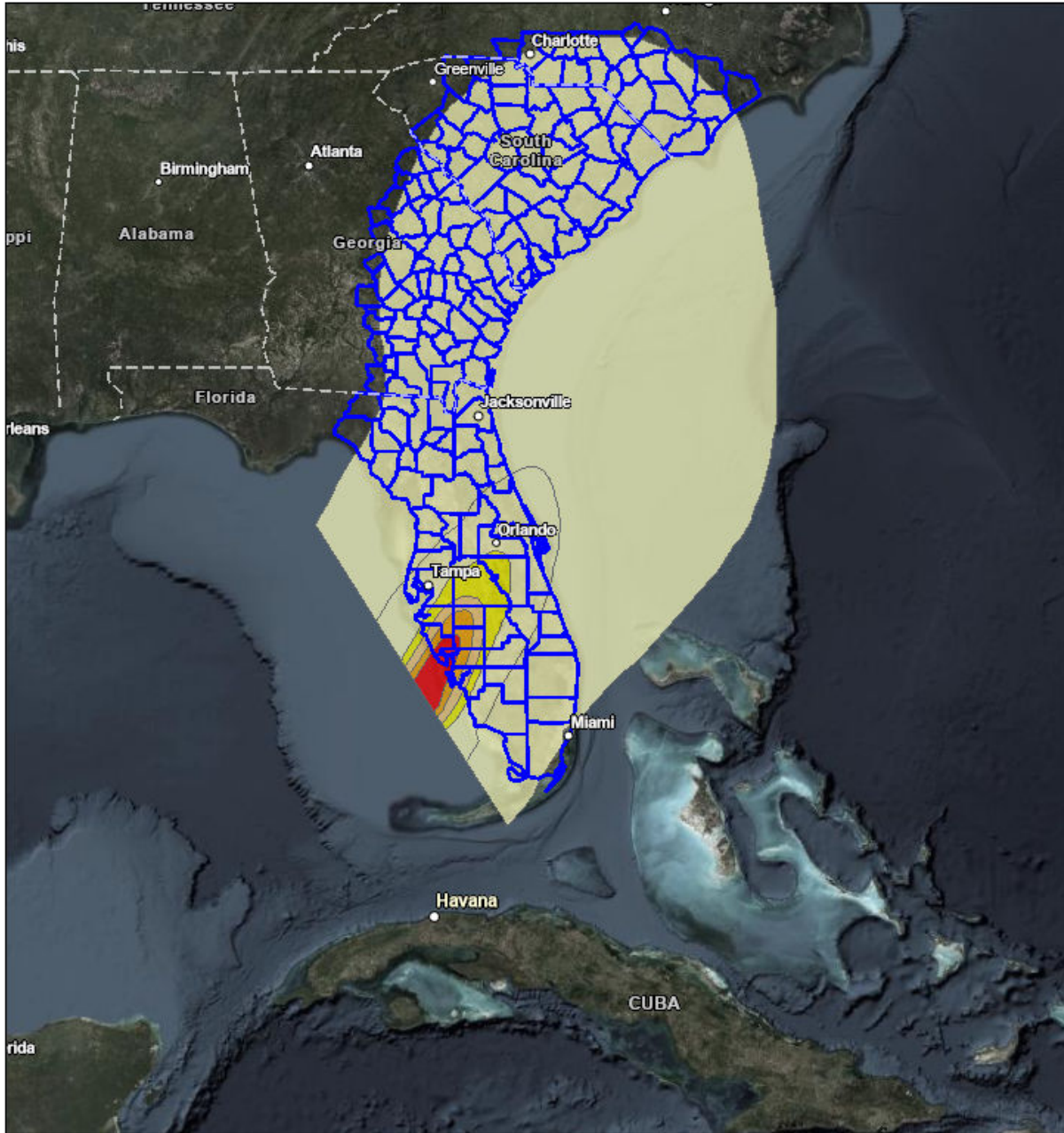


Structures

By Intensity

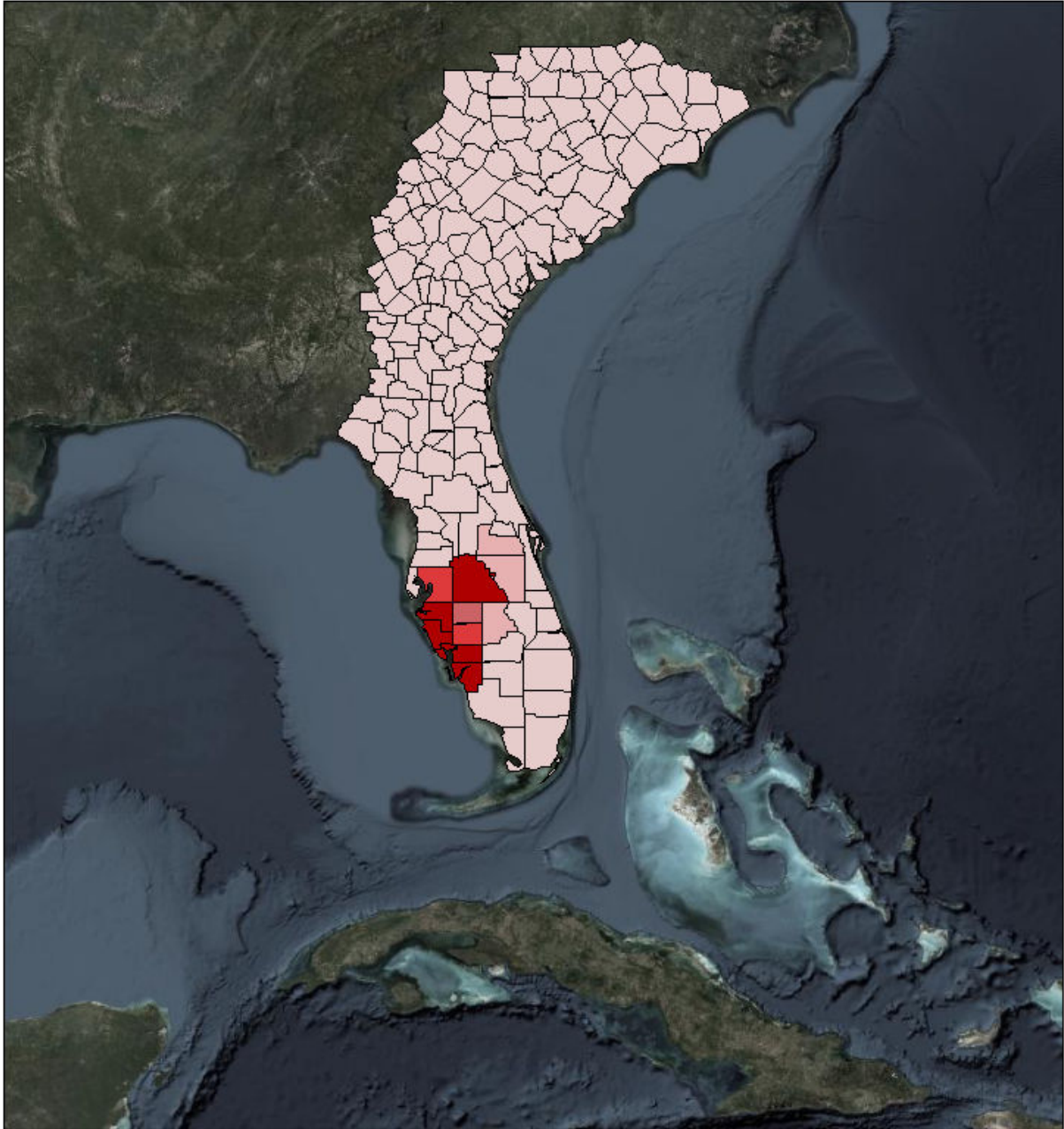


Letter ANSI A Portrait

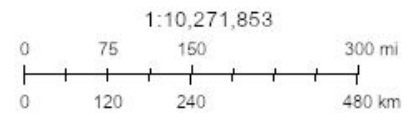
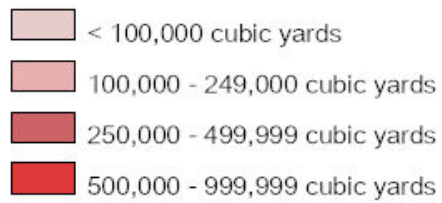


Esri, HERE, Garmin, FAO, NOAA, USGS, EPA, Source: Esri, DigitalGlobe, GeoEye, Earthstar Geographics, CNES/Airbus DS, USDA, USGS, AeroGRID, IGN, and the GIS User Community

Debris



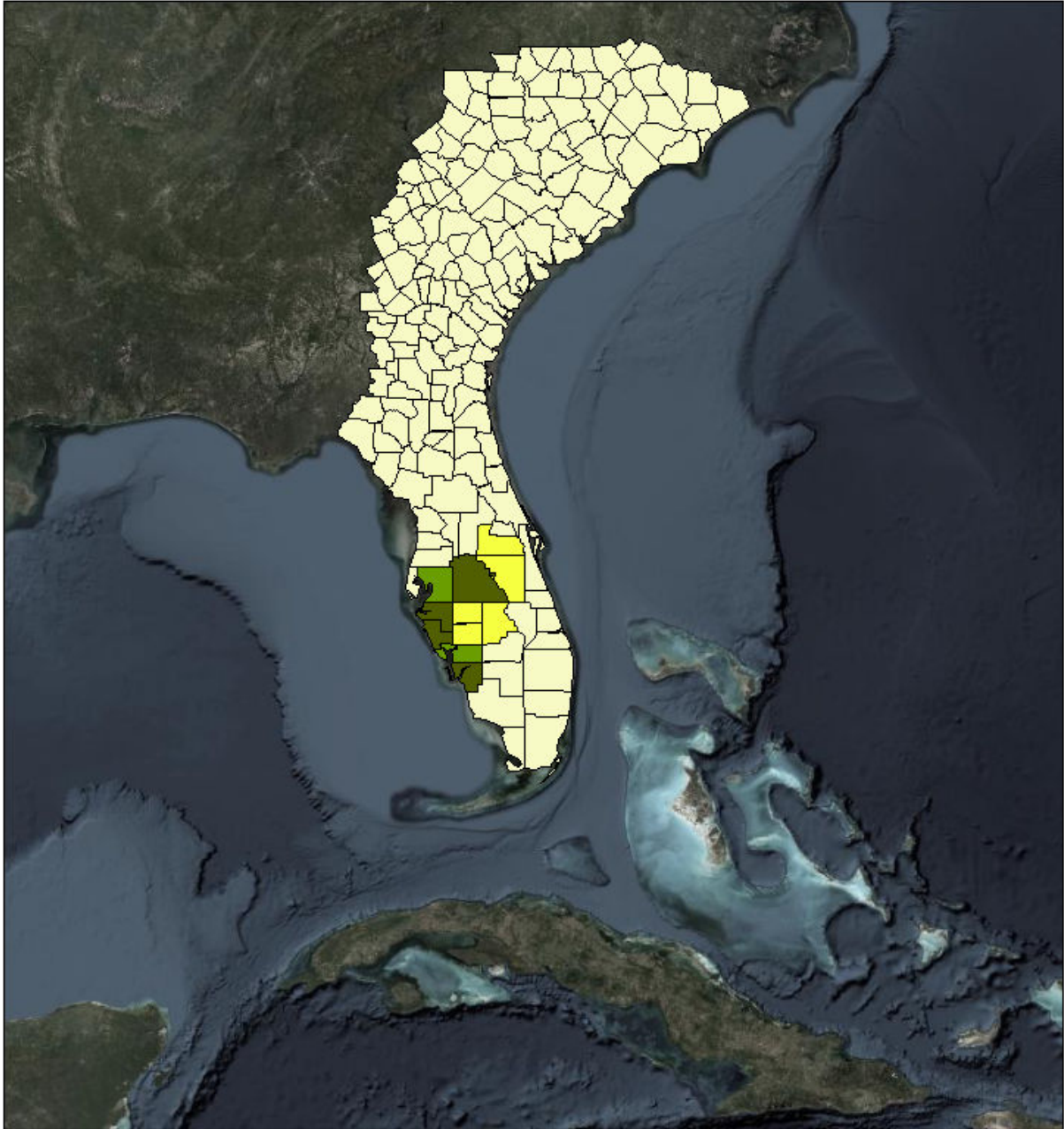
Debris



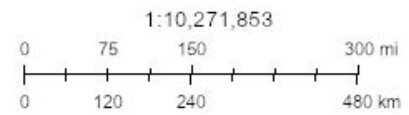
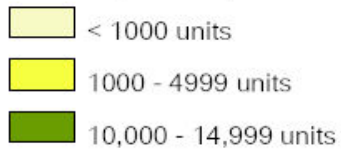
Source: Esri, DigitalGlobe, GeoEye, Earthstar Geographics, CNES/Airbus DS, USDA, USGS, AeroGRID, IGN, and the GIS User Community

Created by SimSuite

Est. Temp. Roofing



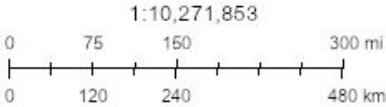
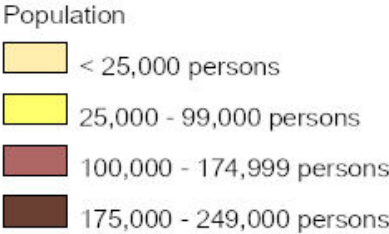
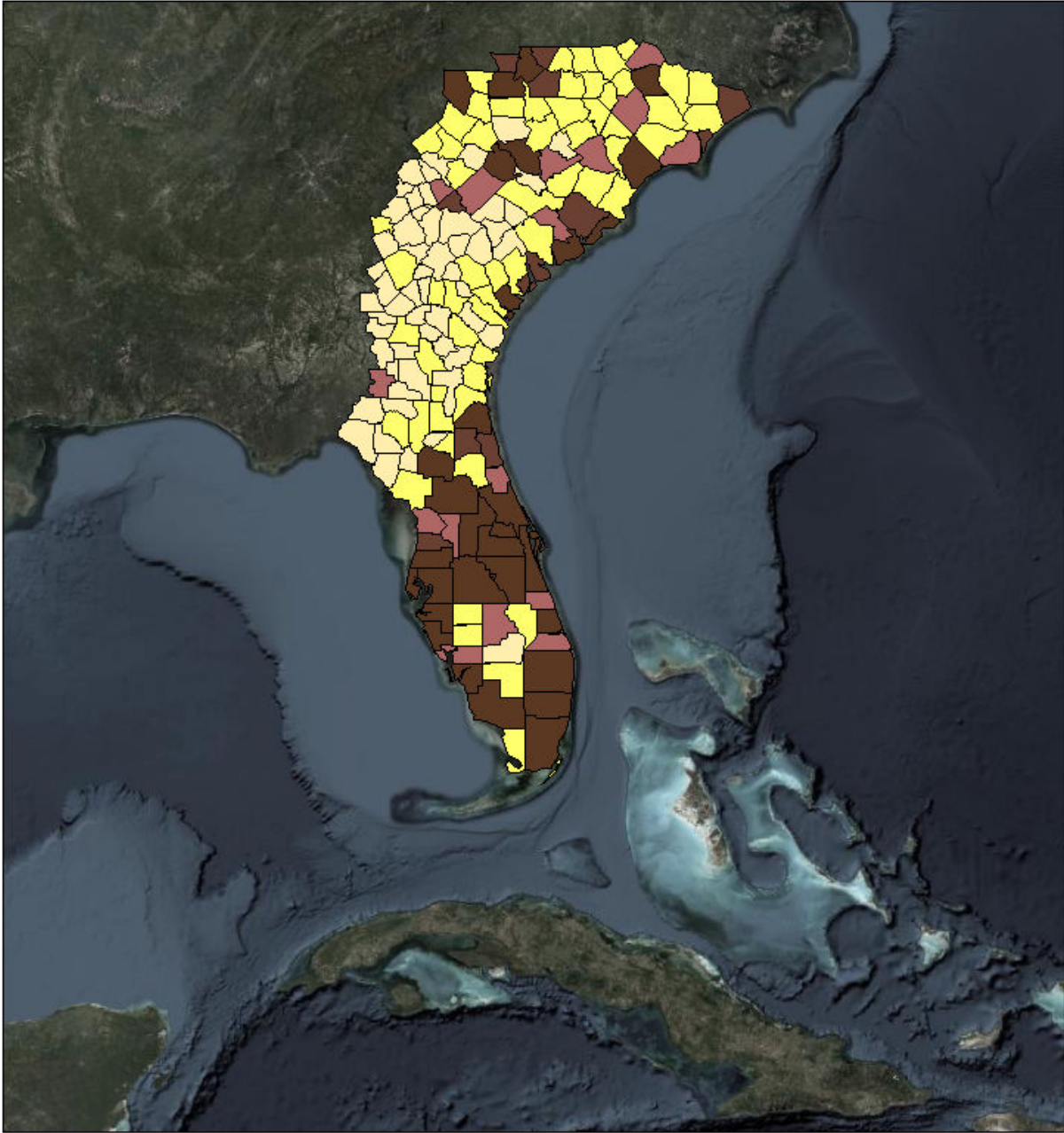
Est. Temp. Roofing



Source: Esri, DigitalGlobe, GeoEye, Earthstar Geographics, CNES/Airbus DS, USDA, USGS, AeroGRID, IGN, and the GIS User Community

Created by SimSuite

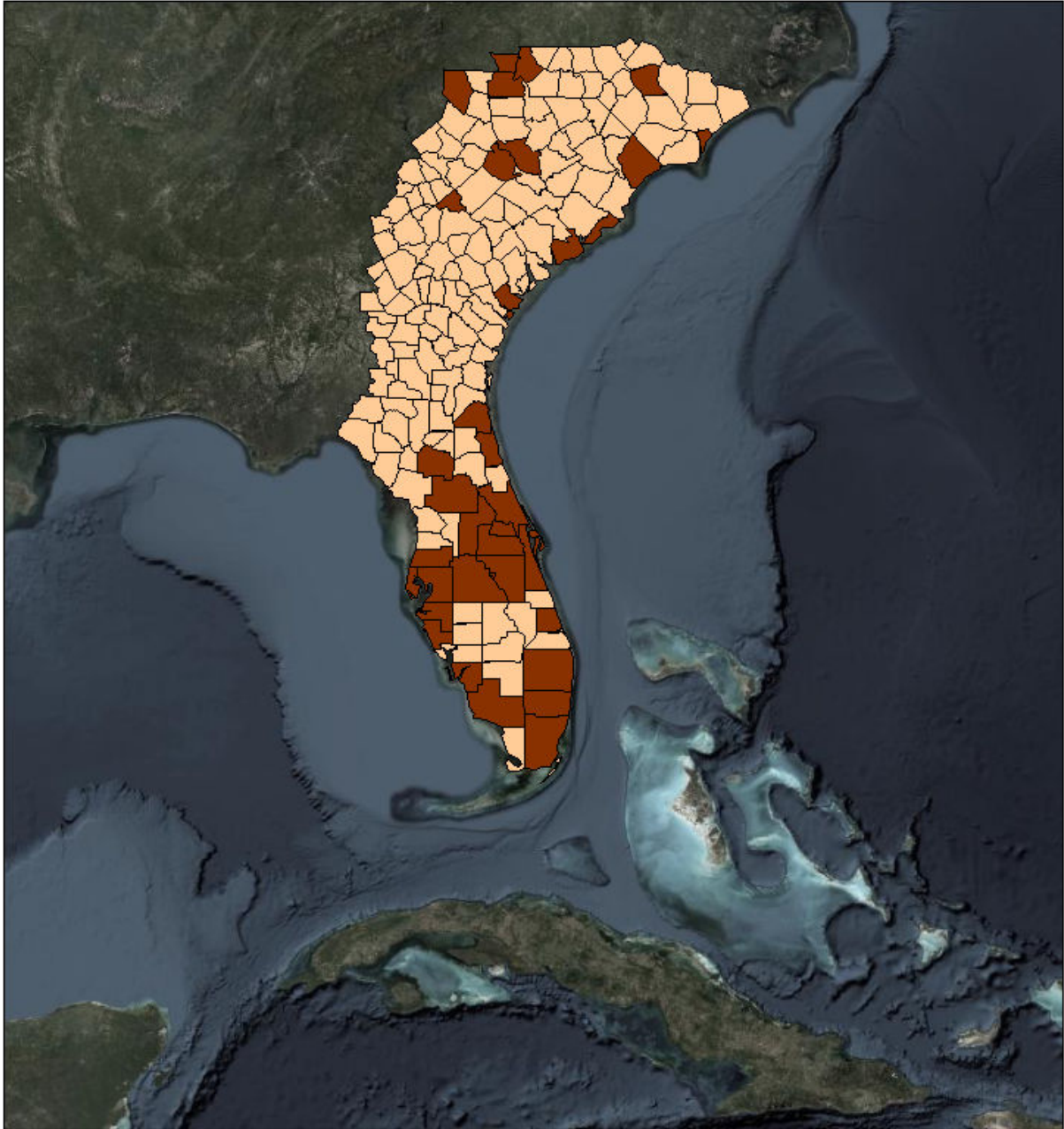
Population



Source: Esri, DigitalGlobe, GeoEye, Earthstar Geographics, CNES/Airbus DS, USDA, USGS, AeroGRID, IGN, and the GIS User Community

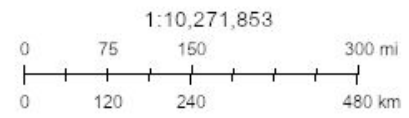
Created by SimSuite

Households



Households

- < 7,500 Households
- 15,000 - 24,999 Households
- 25,000 - 49,999 Households



Source: Esri, DigitalGlobe, GeoEye, Earthstar Geographics, CNES/Airbus DS, USDA, USGS, AeroGRID, IGN, and the GIS User Community

Mission Summary



The mission models account for storm surge and wind damage only, but do not account for other related storm hazards that may affect the mission estimates.

Mission Summary	
Total Counties	14
Debris (cu. yd.)	27,243,949
Est. Temp. Roofing (units)	119,671
Act. Temp. Roofing (units)	39,492
Population	28,737,065
Households	10,265,800

Population Distribution	
Tropical Storm	31,003,105
Category 1	1,625,384
Category 2	575,203
Category 3	394,616
Category 4	233,223

FLORIDA	Yds of Debris (27,243,949)	Est. Roof Units (119,671)	Act. Roof Units (39,492)	Population (19,158,745)	Households (6,889,693)
Alachua	0	0	0	262,216	100,516
Baker	0	0	0	28,042	8,772
Bradford	0	0	0	26,996	9,479
Brevard	0	0	0	578,927	229,692
Broward	0	0	0	1,883,555	686,047
Charlotte	4,178,538	10,199	3,366	173,978	73,370
Citrus	0	0	0	144,825	63,304
Clay	0	0	0	209,524	68,792
Collier	834	13	4	368,652	133,179
Columbia	0	0	0	69,419	24,941
DeSoto	589,530	2,090	690	36,506	11,445
Dixie	0	0	0	16,299	6,316
Duval	0	0	0	932,755	342,450
Flagler	0	0	0	108,166	39,186
Gilchrist	0	0	0	17,436	6,121
Glades	978	16	5	13,588	4,533
Hamilton	0	0	0	14,344	4,617
Hardee	321,043	1,689	557	28,518	8,245
Hendry	0	0	0	39,553	12,025
Hernando	0	0	0	182,273	71,745
Highlands	126,392	1,959	646	102,012	42,604
Hillsborough	849,975	12,311	4,063	1,382,695	474,030

Indian River	0	0	0	149,718	60,176
Lafayette	0	0	0	8,476	2,580
Lake	0	0	0	339,742	121,289
Lee	4,469,055	26,556	8,763	720,426	259,818
Levy	0	0	0	41,097	16,404
Madison	0	0	0	18,862	6,985
Manatee	3,493,943	18,342	6,053	376,566	135,729
Marion	0	0	0	350,915	137,726
Martin	0	0	0	156,333	63,899
Miami-Dade	0	0	0	2,702,302	867,352
Monroe	0	0	0	77,537	32,629
Nassau	0	0	0	80,628	28,794
Okeechobee	9	0	0	39,837	14,013
Orange	193,889	3,089	1,019	1,332,714	421,847
Osceola	185,445	2,955	975	333,980	90,603
Palm Beach	0	0	0	1,441,728	544,227
Pasco	0	0	0	512,082	189,612
Pinellas	0	0	0	968,279	415,876
Polk	1,287,131	17,477	5,768	662,431	227,485
Putnam	0	0	0	74,098	29,409
Sarasota	11,547,188	22,976	7,582	414,899	175,746
Seminole	0	0	0	457,650	164,706
St. Johns	0	0	0	238,439	75,338
St. Lucie	0	0	0	302,601	108,523
Sumter	0	0	0	125,329	41,361
Suwannee	0	0	0	44,733	15,953
Taylor	0	0	0	22,641	7,920
Union	0	0	0	15,704	4,048
Volusia	0	0	0	528,719	208,236

GEORGIA	Yds of Debris (0)	Est. Roof Units (0)	Act. Roof Units (0)	Population (1,890,822)	Households (665,309)
Appling	0	0	0	18,451	6,969
Atkinson	0	0	0	9,278	2,983
Bacon	0	0	0	11,414	4,214
Baldwin	0	0	0	46,287	16,788
Ben Hill	0	0	0	17,395	6,794
Berrien	0	0	0	19,179	7,443
Bleckley	0	0	0	13,279	4,660
Brantley	0	0	0	18,729	6,885
Bryan	0	0	0	37,469	10,738
Bulloch	0	0	0	73,263	25,575
Burke	0	0	0	22,837	8,533
Camden	0	0	0	53,037	18,047

Candler	0	0	0	10,868	4,041
Charlton	0	0	0	13,121	3,927
Chatham	0	0	0	292,686	103,038
Clinch	0	0	0	6,915	2,572
Coffee	0	0	0	44,088	14,817
Columbia	0	0	0	153,260	44,898
Dodge	0	0	0	21,017	8,177
Echols	0	0	0	4,137	1,329
Effingham	0	0	0	60,602	18,092
Emanuel	0	0	0	23,103	8,430
Evans	0	0	0	11,202	4,033
Glascocock	0	0	0	3,091	1,162
Glynn	0	0	0	84,625	31,774
Hancock	0	0	0	8,500	3,341
Irwin	0	0	0	9,302	3,495
Jeff Davis	0	0	0	15,280	5,689
Jefferson	0	0	0	16,389	6,241
Jenkins	0	0	0	9,170	3,192
Johnson	0	0	0	9,742	3,347
Lanier	0	0	0	10,158	3,608
Laurens	0	0	0	48,971	18,641
Liberty	0	0	0	64,510	22,155
Lincoln	0	0	0	7,814	3,281
Long	0	0	0	18,728	5,023
Lowndes	0	0	0	114,022	39,747
McDuffie	0	0	0	21,779	8,289
McIntosh	0	0	0	13,862	5,971
Montgomery	0	0	0	9,422	3,287
Pierce	0	0	0	19,286	7,083
Richmond	0	0	0	204,200	76,924
Screven	0	0	0	14,427	5,596
Taliaferro	0	0	0	1,676	759
Tattnall	0	0	0	25,147	8,210
Telfair	0	0	0	16,196	5,543
Toombs	0	0	0	27,659	10,375
Treutlen	0	0	0	6,916	2,543
Ware	0	0	0	35,094	13,654
Warren	0	0	0	5,524	2,315
Washington	0	0	0	21,289	7,547
Wayne	0	0	0	29,612	10,562
Wheeler	0	0	0	7,905	2,152
Wilcox	0	0	0	9,288	2,891
Wilkes	0	0	0	10,336	4,263
Wilkinson	0	0	0	9,285	3,666

NORTH CAROLINA	Yds of Debris (0)	Est. Roof Units (0)	Act. Roof Units (0)	Population (3,556,868)	Households (1,235,881)
Anson	0	0	0	26,294	9,755
Bladen	0	0	0	35,031	14,430
Brunswick	0	0	0	129,300	46,297
Cabarrus	0	0	0	202,126	65,666
Columbus	0	0	0	57,071	22,489
Cumberland	0	0	0	329,248	122,431
Duplin	0	0	0	60,130	22,495
Gaston	0	0	0	218,244	79,867
Harnett	0	0	0	133,215	41,594
Hoke	0	0	0	53,518	16,532
Lee	0	0	0	60,024	22,058
Mecklenburg	0	0	0	1,063,054	362,213
Montgomery	0	0	0	27,607	10,544
Moore	0	0	0	97,517	37,540
New Hanover	0	0	0	225,895	86,046
Onslow	0	0	0	201,435	60,092
Pender	0	0	0	59,850	20,333
Richmond	0	0	0	46,534	18,430
Robeson	0	0	0	136,600	47,997
Sampson	0	0	0	65,148	24,005
Scotland	0	0	0	36,435	13,614
Stanly	0	0	0	61,870	23,589
Union	0	0	0	230,722	67,864

SOUTH CAROLINA	Yds of Debris (0)	Est. Roof Units (0)	Act. Roof Units (0)	Population (4,130,630)	Households (1,474,917)
Abbeville	0	0	0	25,238	9,990
Aiken	0	0	0	170,230	64,253
Allendale	0	0	0	9,774	3,706
Bamberg	0	0	0	15,050	6,048
Barnwell	0	0	0	21,937	8,937
Beaufort	0	0	0	187,450	64,945
Berkeley	0	0	0	207,154	65,419
Calhoun	0	0	0	14,883	6,080
Charleston	0	0	0	403,176	144,309
Cherokee	0	0	0	57,032	21,519
Chester	0	0	0	33,257	12,876
Chesterfield	0	0	0	46,695	18,173
Clarendon	0	0	0	34,844	13,132
Colleton	0	0	0	38,408	15,131
Darlington	0	0	0	67,941	26,531
Dillon	0	0	0	31,456	11,923
Dorchester	0	0	0	157,283	50,259
Edgefield	0	0	0	27,396	9,348
Fairfield	0	0	0	23,515	9,419
Florence	0	0	0	140,540	52,653
Georgetown	0	0	0	62,847	24,524
Greenwood	0	0	0	70,166	27,547
Hampton	0	0	0	21,006	7,598
Horry	0	0	0	327,500	112,225
Jasper	0	0	0	30,101	8,517
Kershaw	0	0	0	64,654	23,928
Lancaster	0	0	0	90,715	29,697
Laurens	0	0	0	67,718	25,525
Lee	0	0	0	18,136	6,797
Lexington	0	0	0	291,357	102,733
Marion	0	0	0	32,432	13,058
Marlboro	0	0	0	28,023	10,383
McCormick	0	0	0	9,946	4,027
Newberry	0	0	0	38,634	14,709
Orangeburg	0	0	0	91,282	35,788
Richland	0	0	0	416,367	145,194
Saluda	0	0	0	20,270	7,527
Spartanburg	0	0	0	305,813	109,246
Sumter	0	0	0	109,033	40,398
Union	0	0	0	28,317	11,974
Williamsburg	0	0	0	33,331	13,007
York	0	0	0	259,723	85,864

1000

0

0

0

200,720

00,000

Critical Infrastructure

Summary			
Total Critical Facilities		2,618	
Power Requirements (kW)		77,079.5	
Range (kW)			
Communications	# FED Gen Req	Range (kW)	Req kW
Cellular Towers (252)	151.2	35 - 75	8,316.0
FM Antennas (92)	4.6	35 - 75	253.0
Education	# FED Gen Req	Range (kW)	Req kW
Private Schools (171)	0.0	200 - 300	0.0
Public Schools (568)	170.4	200 - 300	42,600.0
Colleges and Universities (39)	0.8	200 - 300	195.0
Emergency Services	# FED Gen Req	Range (kW)	Req kW
911 Call Centers (0)	0.0	15 - 35	0.0
Emergency Medical Service (260)	26.0	15 - 35	650.0
Fire Stations (246)	24.6	15 - 35	615.0
Healthcare	# FED Gen Req	Range (kW)	Req kW
Nursing Homes (400)	60.0	35 - 100	4,050.0
Hospitals (38)	11.4	800 - 2000	15,960.0
Urgent Care Facilities (48)	9.6	200 - 300	2,400.0
Law Enforcement	# FED Gen Req	Range (kW)	Req kW
Local Police (72)	7.2	15 - 35	180.0
Correctional Facilities (0)	0.0	400 - 600	0.0
State and Local EOCs	# FED Gen Req	Range (kW)	Req kW
Local Emergency Operations Centers (11)	2.2	15 - 40	60.5
State Emergency Operation Centers (EOCs) (0)	0.0	15 - 35	0.0
State Facilities	# FED Gen Req	Range (kW)	Req kW
Governors Mansions (0)	0.0	100 - 200	0.0
Major State Government Buildings (1)	0.1	100 - 200	15.0

Transportation	# FED Gen Req	Range (kW)	Req kW
Amtrack Stations (8)	0.0	100 - 300	0.0
Bus Stations (13)	0.0	100 - 300	0.0
Intermodal Terminal Facilities (19)	0.0	100 - 300	0.0
Railroad Stations (8)	0.0	100 - 300	0.0
Public-Use Airports (140)	16.8	40 - 100	1,176.0

Water and Wastewater	# FED Gen Req	Range (kW)	Req kW
Wastewater Treatment Plants (232)	11.6	35 - 70	609.0

Poverty Level

#	County	Cat	Pop. below Federal poverty line	% Population
1	Lee County	4	88,294	12
2	Manatee County	4	42,675	11
3	Sarasota County	4	36,496	9
4	Charlotte County	4	19,302	11
5	DeSoto County	4	9,200	26
6	Hardee County	3	6,189	25
7	Hillsborough County	2	200,179	14
8	Polk County	2	104,509	15
9	Highlands County	2	16,511	16
10	Orange County	1	190,145	14
11	Osceola County	1	48,325	13
12	Collier County	1	41,222	11
13	Okeechobee County	1	6,818	18
14	Glades County	1	2,127	17

COVID-19

#	County	Cases
1	Hillsborough	455,614
2	Orange	454,463
3	Polk	245,072
4	Lee	229,428
5	Osceola	137,251
6	Manatee	117,012
7	Sarasota	114,303
8	Collier	100,123
9	Charlotte	45,089
10	Highlands	29,120
11	Okeechobee	12,063
12	DeSoto	10,790
13	Hardee	9,921
14	Glades	2,224

Report Generated by SimSuite

<https://simsuite.usace.army.mil/wab/v2.15/MissionModels/#advid=272&oid=84&name=Hurricane%20Ian&advisory=Advisory%20%2323&advlf=G>